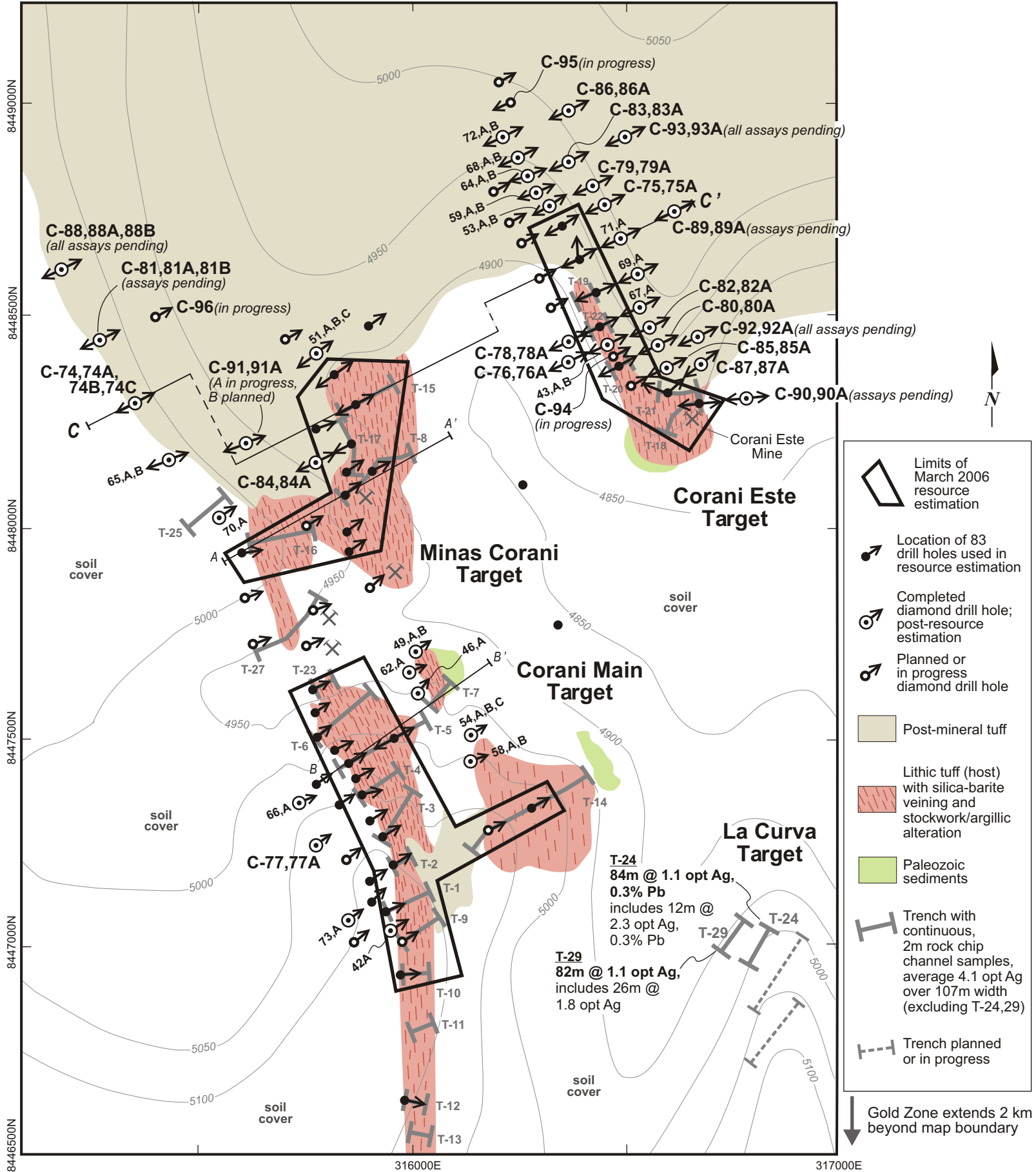


# Corani Ag-Au Project, Peru - Silver Zone Drill Hole Map



**Limits of March 2006 resource estimation**

**Location of 83 drill holes used in resource estimation**

**Completed diamond drill hole; post-resource estimation**

**Planned or in progress diamond drill hole**

**Post-mineral tuff**

**Lithic tuff (host) with silica-barite veining and stockwork/argillic alteration**

**Paleozoic sediments**

**Trench with continuous, 2m rock chip channel samples, average 4.1 opt Ag over 107m width (excluding T-24,29)**

**Trench planned or in progress**

**Gold Zone extends 2 km beyond map boundary**

**T-24**  
84m @ 1.1 opt Ag,  
0.3% Pb  
includes 12m @  
2.3 opt Ag,  
0.3% Pb

**T-29**  
82m @ 1.1 opt Ag,  
includes 26m @  
1.8 opt Ag