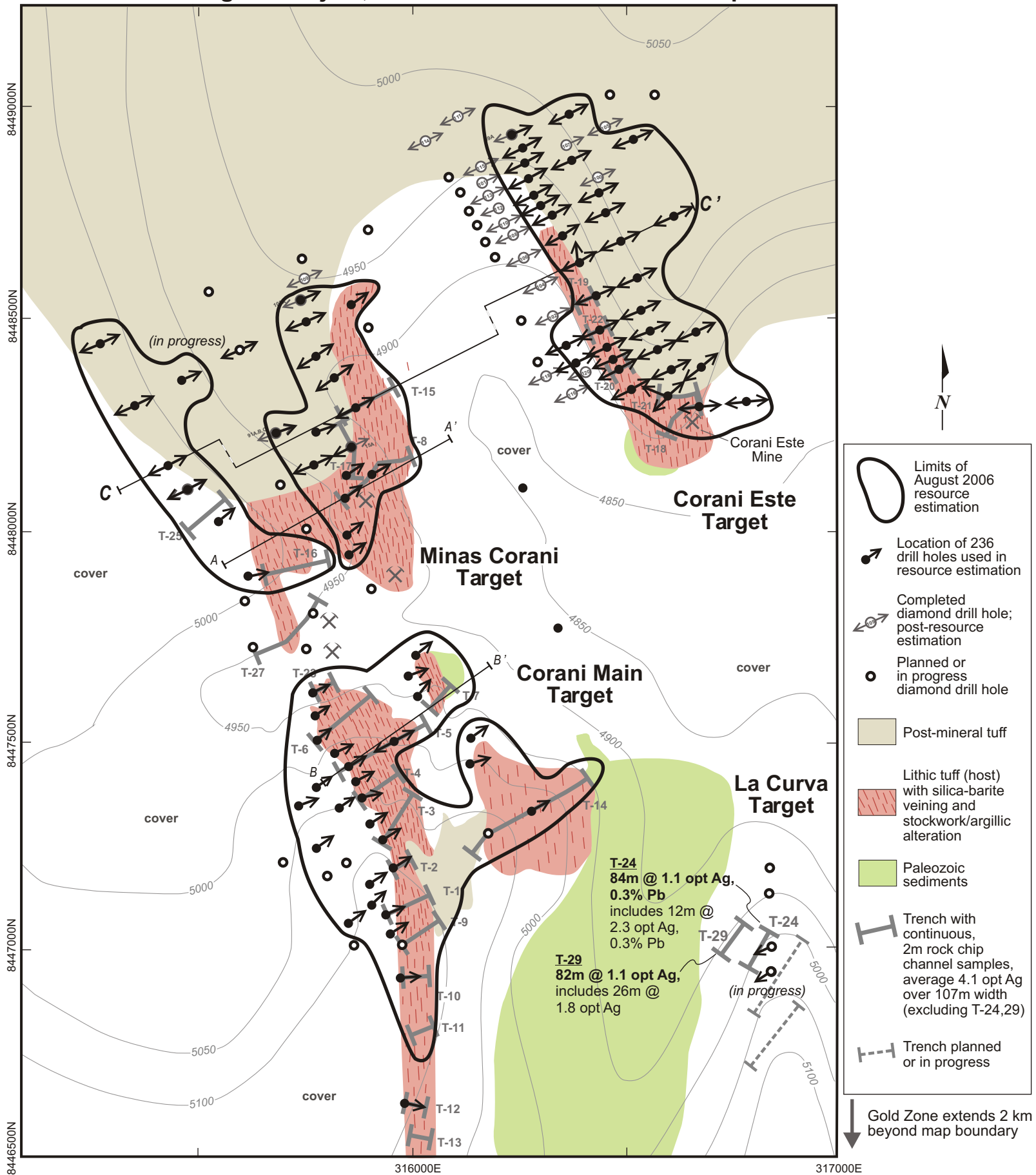


# Corani Ag-Au Project, Peru - Silver Zone Drill Hole Map



**Legend**

- Limits of August 2006 resource estimation
- Location of 236 drill holes used in resource estimation
- Completed diamond drill hole; post-resource estimation
- Planned or in progress diamond drill hole
- Post-mineral tuff
- Lithic tuff (host) with silica-barite veining and stockwork/argillic alteration
- Paleozoic sediments
- Trench with continuous, 2m rock chip channel samples, average 4.1 opt Ag over 107m width (excluding T-24,29)
- Trench planned or in progress

**T-24**  
 84m @ 1.1 opt Ag,  
 0.3% Pb  
 includes 12m @  
 2.3 opt Ag,  
 0.3% Pb

**T-29**  
 82m @ 1.1 opt Ag,  
 includes 26m @  
 1.8 opt Ag

Gold Zone extends 2 km beyond map boundary